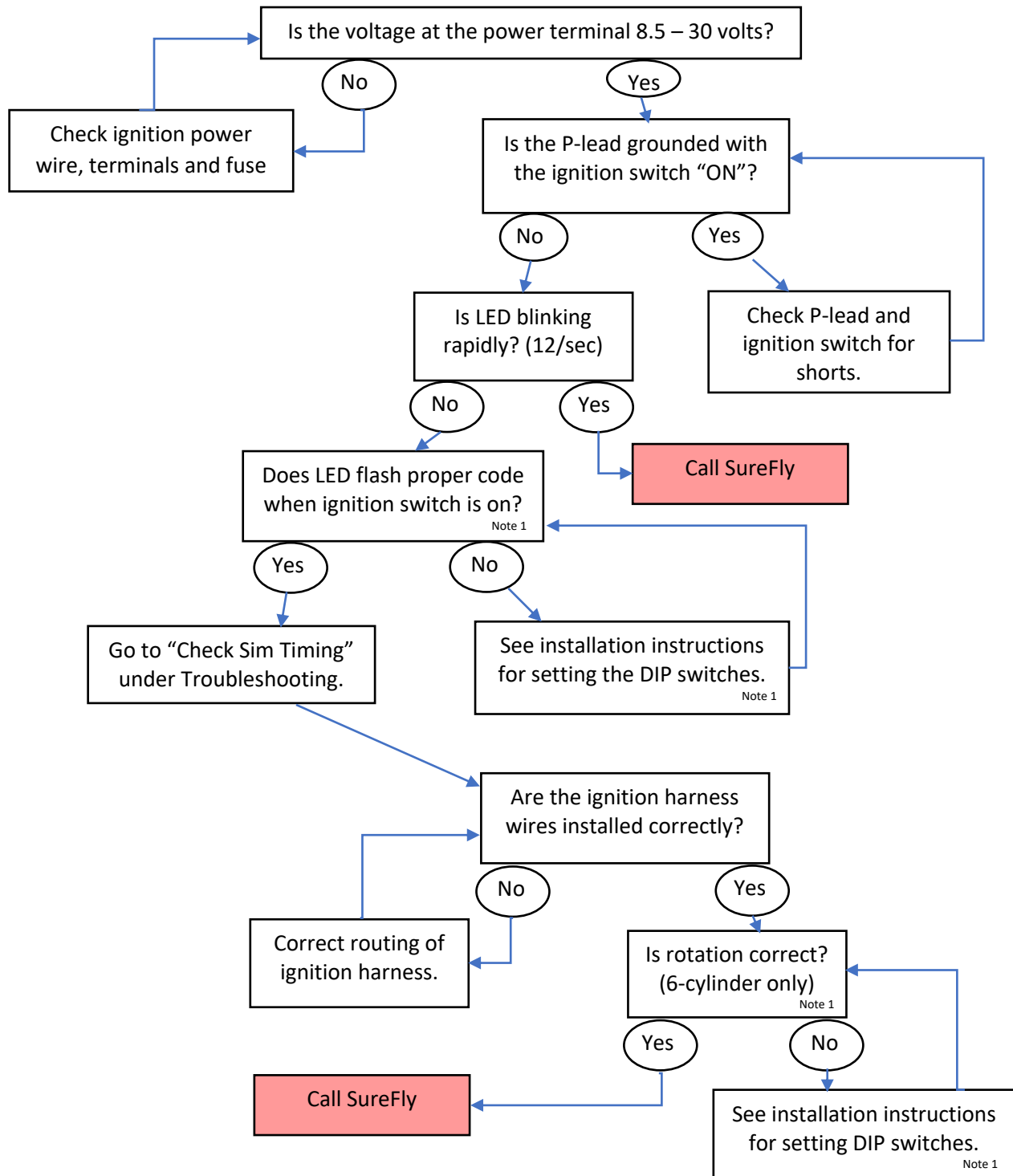


Tail # _____

Name _____

Will not start / Kickback on start / Will not run on SureFly



Note 1: SureFly installation instructions, page 8, contains the code chart. If DIP switches are moved, power must be removed from the Power terminal and applied to the Timing terminal for a few seconds. Replace the power on the Power terminal, and if the P-lead is ungrounded, you should see a flashing code.