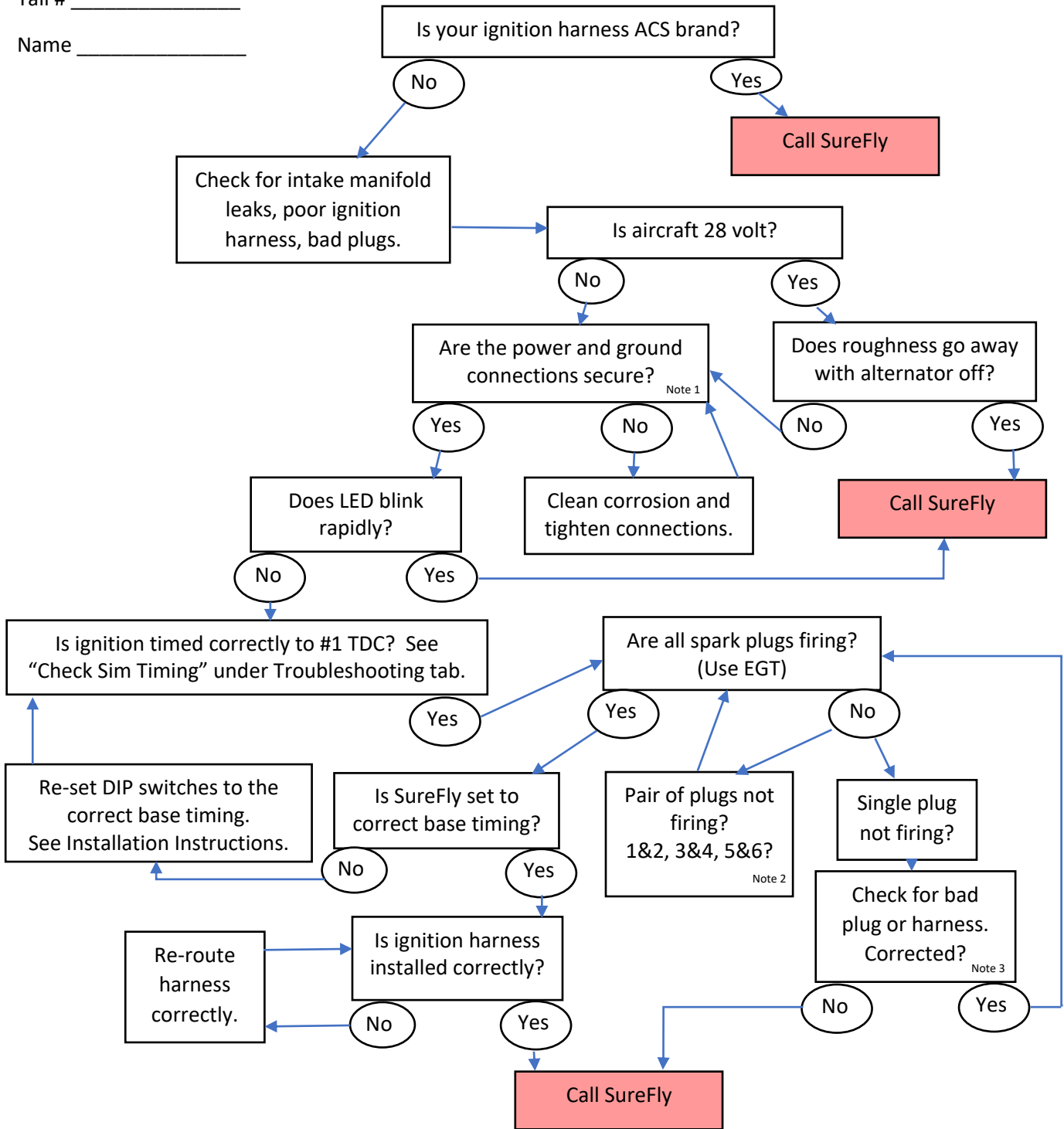


Engine runs rough

Tail # _____

Name _____



Note 1: Verify the security of the power wire connections, fuse holder, and ground straps. If there is corrosion in the ground connection, it can cause intermittent power interruptions.

Note 2: Verify security of wire and shield terminations. Verify the springs inside the cap extend to the bottom of the sockets. When trouble shooting by swapping plugs, swap both plugs in coil pack pairs, for instance, if #1 is cold, swap 1 and 2 with 3 and 4. Recommended plug gap is 0.022".

Note 3: Champion suggests plug resistance should be roughly 500 to 5000 ohms. The plug wires should read roughly 3 ohms per foot.