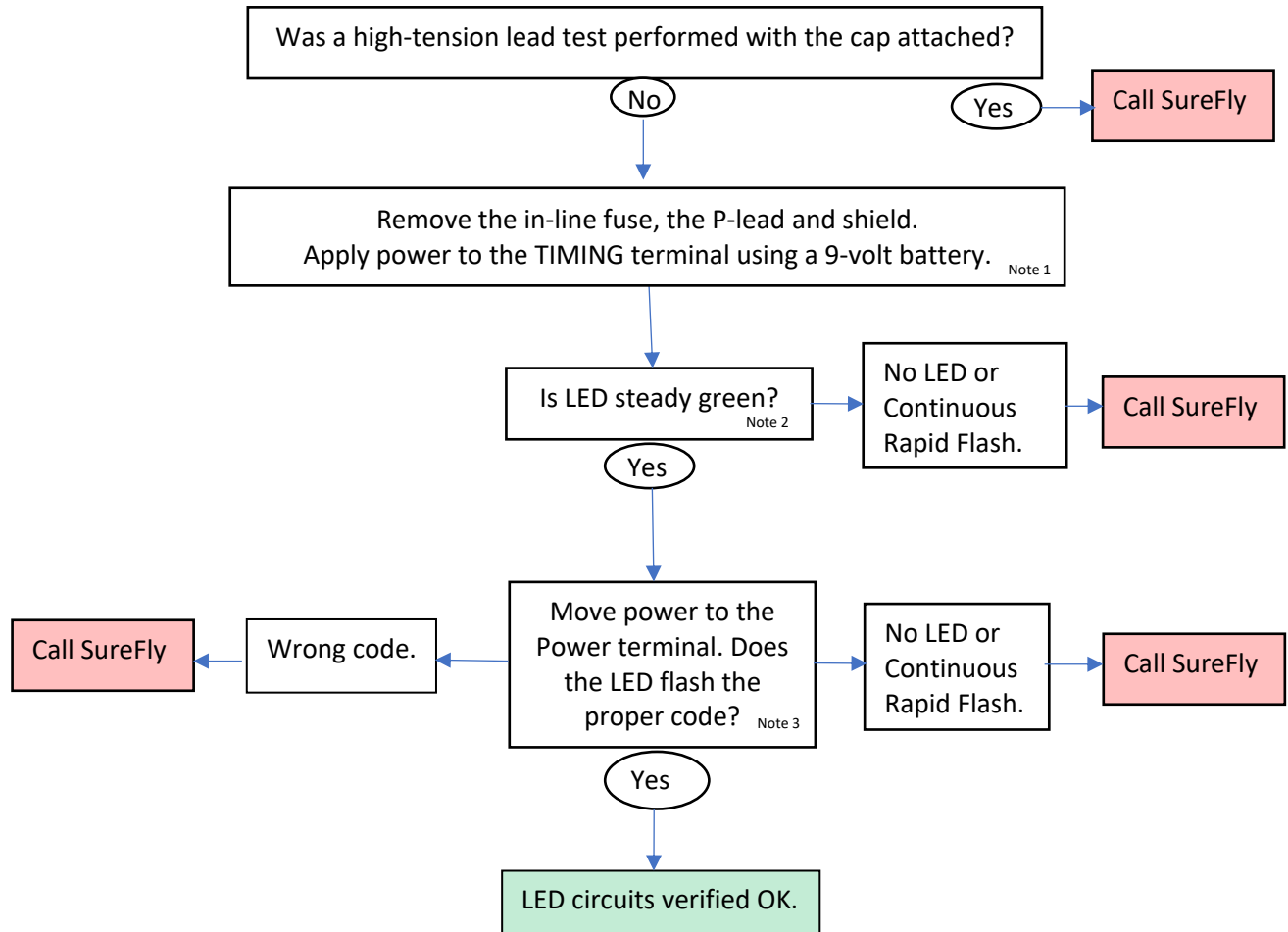


# LED Issues

Tail # \_\_\_\_\_

Name \_\_\_\_\_



**Note 1:** Attach positive to the timing terminal, and negative to the silver case bolt next to it. DO NOT apply power to the timing terminal AND the power terminal simultaneously. Do not use a shop power supply – use a battery. A 9-volt will work just fine.

**Note 2:** If the LED does not illuminate, turn the shaft slightly in case it was on the timing mark.

**Note 3:** The LED will flash a 4-digit code four times each time the P-lead is ungrounded, or the power is cycled with the P-lead ungrounded. The code chart is on page 8 of the installation manual.