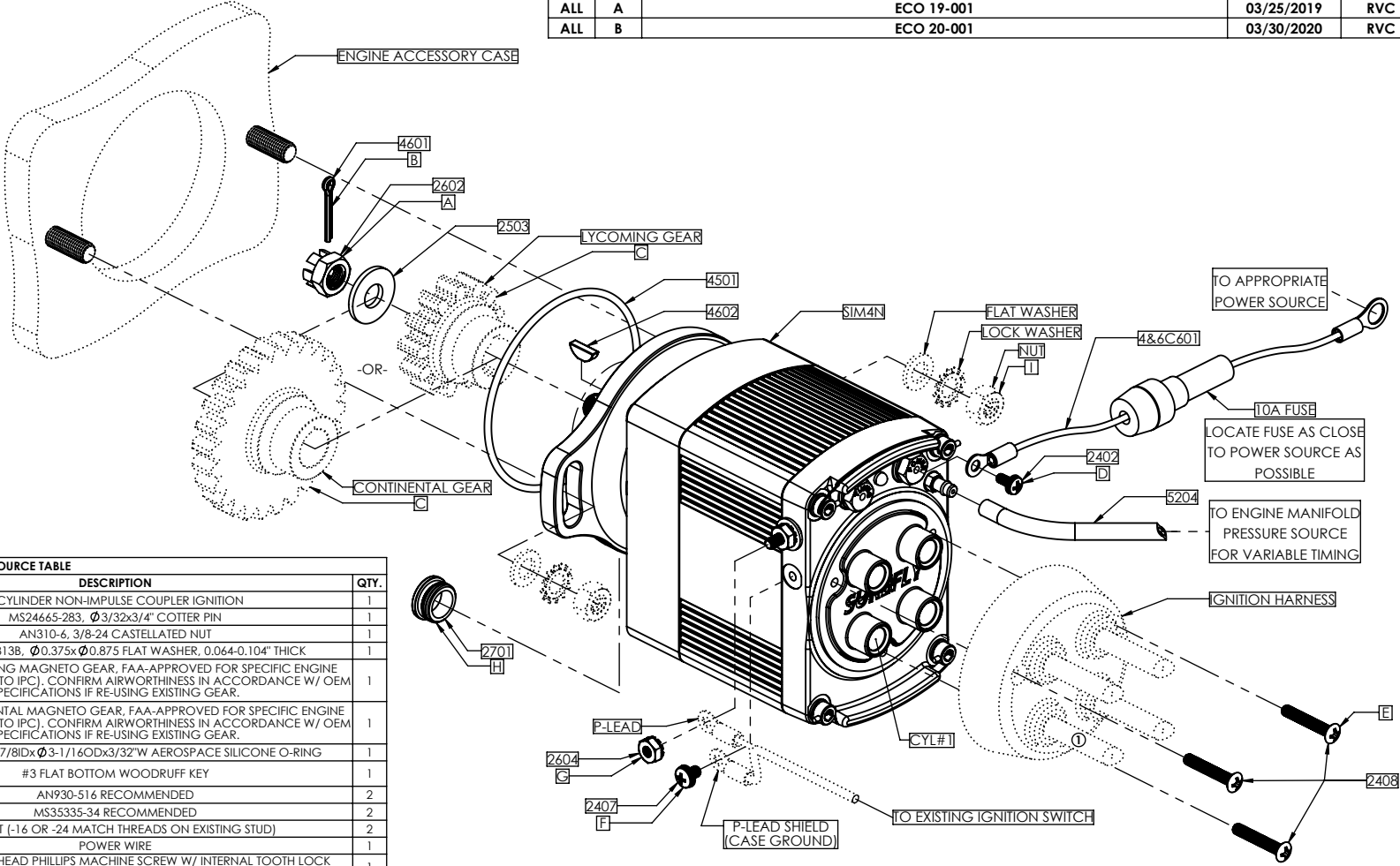


### REVISIONS

ZONE	REV.	DESCRIPTION	DATE	APPROVED
ALL	PT-1	PROTOTYPE 1	04/14/2017	RVC
ALL	PT-2	PROTOTYPE 2	06/01/2017	RVC
ALL	IR	INITIAL RELEASE FOR PRODUCTION	05/21/2018	RVC
ALL	A	ECO 19-001	03/25/2019	RVC
ALL	B	ECO 20-001	03/30/2020	RVC



#### SOURCE TABLE

PART #	TYPE	DESCRIPTION	QTY.
SIM4N	PROPRIETARY	4 CYLINDER NON-IMPULSE COUPLER IGNITION	1
4601	COMMERCIAL	MS24665-283, Ø3/32x3/4" COTTER PIN	1
2602	COMMERCIAL	AN310-6, 3/8-24 CASTELLATED NUT	1
2503	COMMERCIAL	NASM15795-813B, Ø0.375xØ0.875 FLAT WASHER, 0.064-0.104" THICK	1
LYCOMING GEAR	FAA-APPROVED	13 TOOTH LYCOMING MAGNETO GEAR, FAA-APPROVED FOR SPECIFIC ENGINE APPLICATION (REFER TO IPC), CONFIRM AIRWORTHINESS IN ACCORDANCE W/ OEM SPECIFICATIONS IF RE-USING EXISTING GEAR.	1
CONTINENTAL GEAR	FAA-APPROVED	26 TOOTH CONTINENTAL MAGNETO GEAR, FAA-APPROVED FOR SPECIFIC ENGINE APPLICATION (REFER TO IPC), CONFIRM AIRWORTHINESS IN ACCORDANCE W/ OEM SPECIFICATIONS IF RE-USING EXISTING GEAR.	1
4501	COMMERCIAL	AS3582-150 Ø2-7/8IDxØ3-1/16ODx3/32"W AEROSPACE SILICONE O-RING	1
4602	COMMERCIAL	#3 FLAT BOTTOM WOODRUFF KEY	1
FLAT WASHER	EXISTING	AN930-516 RECOMMENDED	2
LOCK WASHER	EXISTING	MS35335-34 RECOMMENDED	2
NUT	EXISTING	5/16 NUT (-16 OR -24 MATCH THREADS ON EXISTING STUD)	2
4&6C601	PROPRIETARY	POWER WIRE	1
2402	COMMERCIAL	#6-32x5/16" PAN HEAD PHILLIPS MACHINE SCREW W/ INTERNAL TOOTH LOCK WASHER	1
5204	COMMERCIAL	Ø 1/8 x Ø 1/4" x 24" VITON TUBING	1
IGNITION HARNESS	FAA-APPROVED	"SLICK STYLE" IGNITION HARNESS, FAA-APPROVED FOR SPECIFIC AIRFRAME AND/OR ENGINE APPLICATION (REFER TO IPC), CONFIRM AIRWORTHINESS IN ACCORDANCE W/ OEM SPECIFICATIONS IF RE-USING EXISTING HARNESS.	1
2408	COMMERCIAL	#8-32x1" OVAL HEAD PHILLIPS MACHINE SCREW	3
P-LEAD	EXISTING	EXISTING AIRCRAFT P-LEAD & SHIELD (FROM COCKPIT IGNITION SWITCH)	1
2407	COMMERCIAL	#8-32x1/4" PAN HEAD PHILLIPS MACHINE SCREW W/ INTERNAL TOOTH LOCK WASHER	1
2604	COMMERCIAL	#8-32 HEX NUT W/ EXTERNAL TOOTH LOCK WASHER	1
2701	COMMERCIAL	PG9 THREADED PLUG W/ O-RING	1
A	-	TORQUE TO 120-180 INCH-LBS. TIGHTEN TO ALIGN CASTALLATED NUT. DO NOT EXCEED 250 INCH-LBS. LIGHTLY LAP BASE OF NUT IF UNABLE TO ALIGN.	1
B	-	LOCK CASTELLATED NUT WITH COTTER PIN IN ACCORDANCE W/ AC43.13	1
C	-	RE-INSTALL GEAR 180° AROUND IF UNABLE TO TIME SUREFLY IGNITION MODULE TO ENGINE	*
D	-	CONNECT RING TERMINAL UNDER SCREW & TORQUE TO 10±2 INCH-LBS	1
E	-	TORQUE TO 18±2 INCH-LBS	3
F	-	TORQUE TO 15±2 INCH-LBS	1
G	-	BACK TERMINAL NUT W/ WRENCH & TORQUE TO 15±2 INCH-LBS	1
H	-	APPLY MEDIUM STRENGTH THREAD LOCKING COMPOUND & TORQUE TO 20±2 INCH-LBS	1
I	-	TORQUE TO 150 - 160 INCH-LBS	2

**SureFly**  
Granbury, Texas

### SIM4N HARDWARE KIT

SCALE:	MATERIAL:	FINISH:
1:2.5	N/A	N/A
DIMENSIONS IN INCHES UNLESS OTHERWISE SPECIFIED		DRAWN BY:
		R. CONDY
		DATE:
		05/21/2018
TOLERANCES:		
ANGLES	0.X	0.XX
±1°	±0.050	±0.030
		±0.010
SHEET:	PART NO:	REV:
1/1	<b>SIM4N-HW</b>	<b>B</b>